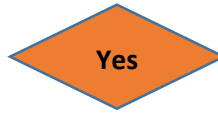


North Somerset Safeguarding Children Board Child Sexual Exploitation (CSE) Training Pathway

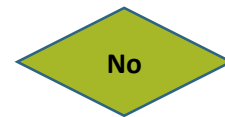
Do you work with or have contact with children, young people, parents and carers?



You need to know what to look for which may indicate that a child is at risk of, or is being sexually exploited and know who to contact and seek advice from if you have concerns



Are you a Manager or (Designated) Safeguarding Lead, or are you already familiar with the signs and indicators of child sexual exploitation?



Attend: Child Sexual Exploitation Advanced

This course is aimed at Managers and Supervisors, Designated Safeguarding Leads and decision makers.

It looks at different forms of exploitation, application of the Threshold document to CSE, the grooming process, learning from serious case reviews, and the use of screening tools to support professional judgments around risk



Attend: Child Sexual Exploitation (Awareness Raising)

This course provides essential knowledge for all practitioners who have direct contact with children.

It looks at who might be at risk, models of child sexual exploitation, recognising vulnerabilities and risk indicators and what to do if you are concerned



Do you work directly with children, young people, parents and carers who are affected by, or at risk of child sexual exploitation?



The following optional courses are focussed on interventions, providing knowledge, skills and tools to support individual roles as appropriate. (further information about these courses can be found overleaf)



Missing and Return Interview Training

Working with Child Sexual Exploitation: Skills and Practice

Working with Parents and Child Sexual Exploitation

North Somerset Safeguarding Children Board Child Sexual Exploitation (CSE) Training Pathway

Interventions Training to Support Individual Roles as Appropriate

Missing and Return Interview Training

This training is suitable for those who may conduct missing and return interviews and looks at:

- Risks to young people who go missing and the reasons why they go missing
 - Legislation and Guidance
 - How to use the Return Interview proforma
- Techniques to use with young people when conducting return interviews

Working with Child Sexual Exploitation:

Skills and Practice

This course will increase knowledge and understanding of child sexual exploitation and provide a range of skills and tools that can be used in direct work with sexually exploited children and young people

Working with Parents and Child Sexual Exploitation

This course will develop skills and provide tools to support practice when working with parents and families of young people affected by child sexual exploitation.

It considers the impact on the family, the benefits and difficulties of working with parents/carers of young people who are being exploited or at risk, and explores research and strategies to support practice.